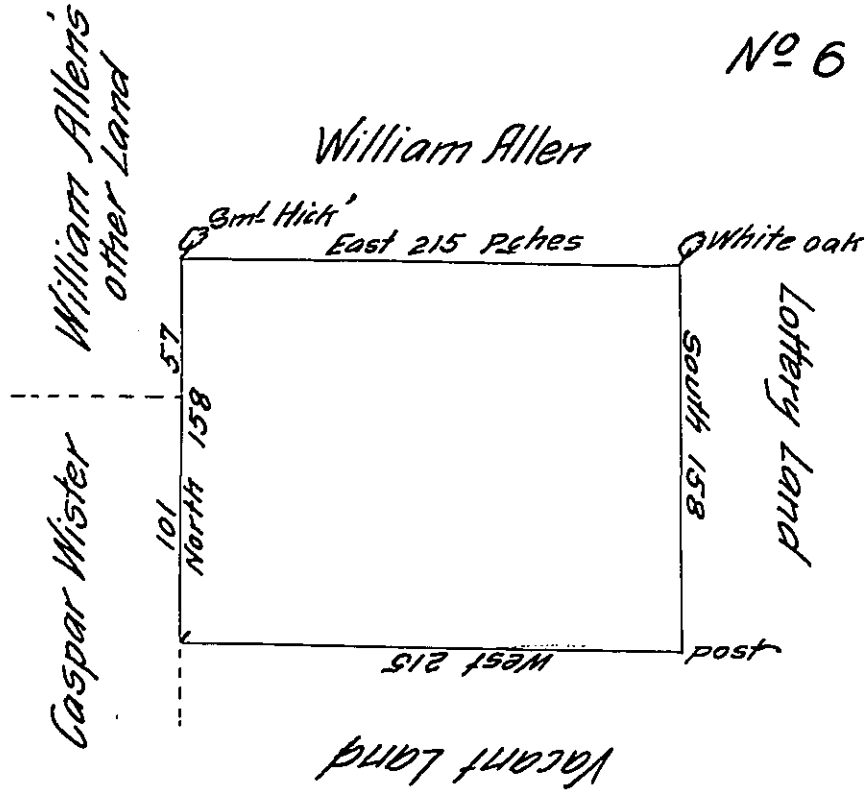


158
 215
 790
 158
 316
 33970 | 212
 135



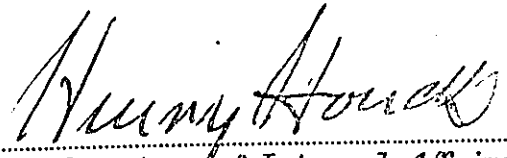
Surveyed on the 26th day of October 1736 to John Simson
 in Right of William & Margaret Lowther the above described Tract
 of land Situate in the Forks of Delaware-in the County of Bucks
 Containing 200 Acres with the Usual allowance of Six & Cent.

In part of 5000^{ac}

Nich^o Scull

Warr^t dated the 31st of 10ber 1733.

IN TESTIMONY that the above is a copy of the original remaining on file in
 the Department of Internal Affairs of Pennsylvania, made
 conformably to an Act of Assembly approved the 16th day of
 February, 1833, I have hereunto set my Hand and caused
 the Seal of said Department to be affixed at Harrisburg,
 this twelfth day of December 1910.


 Secretary of Internal Affairs.